

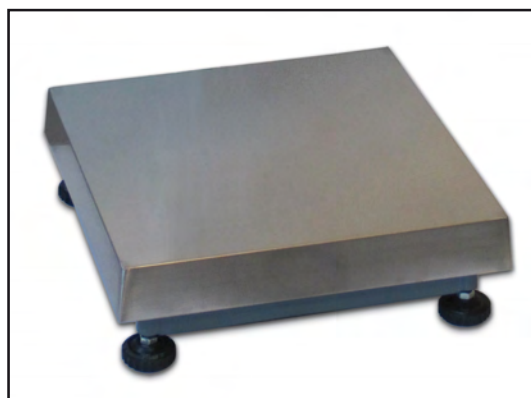


	Carico massimo statico Max static load	Dimensioni Dimensions
ACN6 ACN15 ACN30 ACN50	6 / 15 / 30 / 50 kg.....	300 x 300 mm
ACN60 ACN120	60 / 120 kg	400 x 400 mm
ACN150 ACN300	150 / 300 kg.....	600 x 600 mm
ACN600	600 kg.....	800 x 800 mm

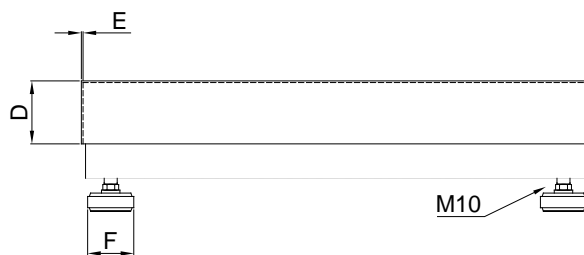
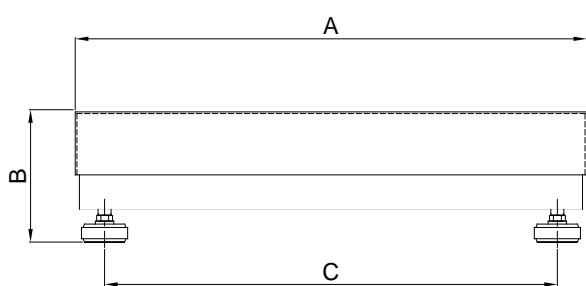
OPZIONI A RICHIESTA :	OPTIONS ON REQUEST :
- Maggiorazione per portate fuori standard.....	- Additional price for non-standard platforms
- Versione ATEX  II 1 GD (zone 0-1-2-20-21-22).....	- ATEX version  II 1 GD (zone 0-1-2-20-21-22).....
- Colonna inox portaindicatore (Ø 38 mm, h 700 mm) con staffa in acciaio inox per fissaggio alla piattaforma	- Indicator stainless steel stand (Ø 38 mm, h 700 mm) with stainless steel bracket for platform mounting
- Colonna inox portaindicatore (Ø 38 mm, h 700 mm) con staffa in acciaio verniciato per fissaggio alla piattaforma	- Indicator stainless steel stand (Ø 38 mm, h 700 mm) with painted steel bracket for platform mounting

 **APPROVAZIONE OIML R60 C3**
C3 OIML R60 C3 APPROVED

 **ACN6 / 15 / 30 / 50 / 150 / 300: a richiesta versione approvata OIML R60 C4**
C4 ACN6 / 15 / 30 / 50 / 150 / 300: on request OIML R60 C4 version approved



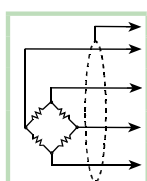
- STRUTTURA TUBOLARE IN ACCIAIO VERNICIATO
- PIANO DI CARICO IN ACCIAIO INOX AISI 304 APPOGGIATO
- CELLA DI CARICO IN LEGA D'ALLUMINIO IP65
- PIEDINI IN ACCIAIO ZINCATO E POLIAMMIDE
- ATTACCO PER COLONNA PORTAINDICATORE
- PAINTED STEEL TUBULAR STRUCTURE
- AISI 304 STAINLESS STEEL LOADING TOP (laid)
- SINGLE-POINT IP65 ALUMINUM LOAD CELL
- GALVANIZED STEEL & POLYAMID FEET
- CONNECTION FOR INDICATOR STAND



Dimensions (mm)

Code	Load cells capacities	Platforms	A	B	C	D	E	F	Gross Weight
ACN6 / 15 / 30 / 50	10 / 20 / 50 / 100 kg	300 x 300 mm	300	125	237	56	1	56	6.5 kg
ACN60 / 120	100 / 200 kg	400 x 400 mm	400	130	337	52	1	56	9.5 kg
ACN150 / 300	200 / 500 kg	600 x 600 mm	600	150	537	77	1.5	56	24.5 kg
ACN600	1000 kg	800 x 800 mm	800	170	715	90	1.8	56	50.5 kg

COLONNA con STAFFA
STAND with BRACKET



	ACN 6 - 120	ACN 150 - 300	ACN 600
SCHERMO (SHIELD)			
+ SEGNALE (+SIGNAL)	VERDE (GREEN)	VERDE (GREEN)	BLU (BLUE)
+ ALIMENT. (+EXCIT.)	ROSSO (RED)	ROSSO (RED)	ROSSO (RED)
* + REF./SENSE (+REF./SENSE)	BLU (BLUE)	BLU (BLUE)	MARRONE (BROWN)
- SEGNALE (-SIGNAL)	BIANCO (WHITE)	BIANCO (WHITE)	BIANCO (WHITE)
- ALIMENT. (-EXCIT.)	NERO (BLACK)	NERO (BLACK)	NERO (BLACK)
* - REF./SENSE (-REF./SENSE)	MARRONE (BROWN)	GIALLO (YELLOW)	GIALLO (YELLOW)

* Dove previsto (where provided)